



# Florida Scholarship Programs District Newsletter

Office of Independent Education and Parental Choice

Volume 3, Issue 5

July-August 2009

## District Verification Deadlines



### Special points of interest:

- The first McKay Verification file for the 2009-10 school year will be available on **August 3, 2009**, and must be completed by **August 10, 2009**.
- **Deadline Reminder: August 2nd** is the enrollment deadline for McKay students. To prevent parent and school confusion, please review your student lists to ensure that the status of McKay applicants is posted in a timely manner.

District enrollment verification of students to be funded through the McKay Scholarship is an important accountability safeguard built into the program to ensure funding is appropriately distributed. The chart below displays the verification dates for the 2009-10 school year. For each payment period, the McKay student file will be available to districts via the Northwest Regional Data Center (NWRDC) site on the date listed for district review and verification, and must be submitted by the deadline in red. Once payments have been issued, the NWRDC will post the list of paid students.

For questions regarding payments, please contact the School Choice Payment Specialist, Scott Lingo, by e-mail at [scott.lingo@fldoe.org](mailto:scott.lingo@fldoe.org).

MCKAY SCHOLARSHIP PROGRAM IMPORTANT DEADLINES			
2009-2010	District Verification File		District FTE File
Payment Period	Available Date	Submission Deadline	Available Date
September	August 3rd	<b>August 10th</b>	September 30th
November	October 5th	<b>October 12th</b>	November 20th
February	January 4th	<b>January 11th</b>	February 19th
April	March 3rd	<b>March 11th</b>	May 7th

**District Verification File:** McKay pre-payment file which is exported to districts to verify students are not enrolled in public school system. This file contains all students the DOE *intends* on paying.

**District FTE File:** McKay post-payment file which identifies the students *who were* paid for the specified payment period and who will need to be reported to generate FTE funding.

Take Note	2
Enrollment Verification Tips	2
Contacts	3



## Take Note

---

### **District Web Site Page: Your Suggestions Welcome**

The District Web Site Page is intended to provide district scholarship specialists with the information and interface to easily review and determine the status of students applying for or participating in Florida's scholarship programs. In the past, improvements such as displaying the Military Waiver status and the program enrollment/withdrawal dates have been added at the suggestion of districts. If there are other changes that you would find helpful, we would welcome your suggestions. Please contact Scott Lingo at [Scott.Lingo@fldoe.org](mailto:Scott.Lingo@fldoe.org).

### **Beware of District Virtual School**

McKay parents and private schools are able to enroll McKay students in up to two Florida Virtual School (FLVS) classes per year while maintaining their McKay Scholarship. FLVS is not funded through FEFP, and thus does not result in loss of the scholarship.

However, enrolling in a **district-run** virtual school program which is FEFP-funded **will result in forfeiture** of the scholarship. If your district offers such a program, please ensure that registrars are aware of this issue and screen for private school students who may be enrolled in the McKay Scholarship Program.

## Enrollment Verification Tips

---

### **Enrollment Status**

Because the August Enrollment Verification process concludes before school begins, there may be uncertainty in some cases as to the student's enrollment status. As a policy, if a student has not officially withdrawn from public school, or has registered as a new public school student, then the district should indicate the student as enrolled on the Enrollment Verification Form.

However, if the student was withdrawn by the parent from public school, or if the student was not enrolled in public school at the end of the previous year, the student should not be shown as enrolled for the current year.

### **Withdrawal: A Critical Step**

Please note that when a student is determined to have returned to public school, the district must withdraw the student on the Web site to indicate the student returned to public school. This action will prevent the system from incorrectly generating any payments.

## FERPA

---

The revised "Family Educational Rights and Privacy Act" (FERPA) is now available and may be viewed at <http://info.fldoe.org/docushare/dsweb/Get/Document-5441/dps-2009-103.pdf>. The purpose of this Technical Assistance Paper (TAP) is to provide information for educators, agency personnel and families regarding the privacy rights related to student records. Citations are provided for applicable federal and state law. For questions, please contact Bettye Hyle, Team Leader for Student Services, Bureau of Exceptional Education and Student Services, (850) 922-3727 or via e-mail [bhyle@tempest.coedu.usf.edu](mailto:bhyle@tempest.coedu.usf.edu).

# Office of Independent Education and Parental Choice

**Michael Kooi**  
Executive Director

Florida Department of Education  
325 W. Gaines Street, Suite 522  
Tallahassee, FL 32399-0400

Toll-Free: (800) 447-1636  
Fax: (850) 245-0875  
Email: [schoolchoice@fldoe.org](mailto:schoolchoice@fldoe.org)

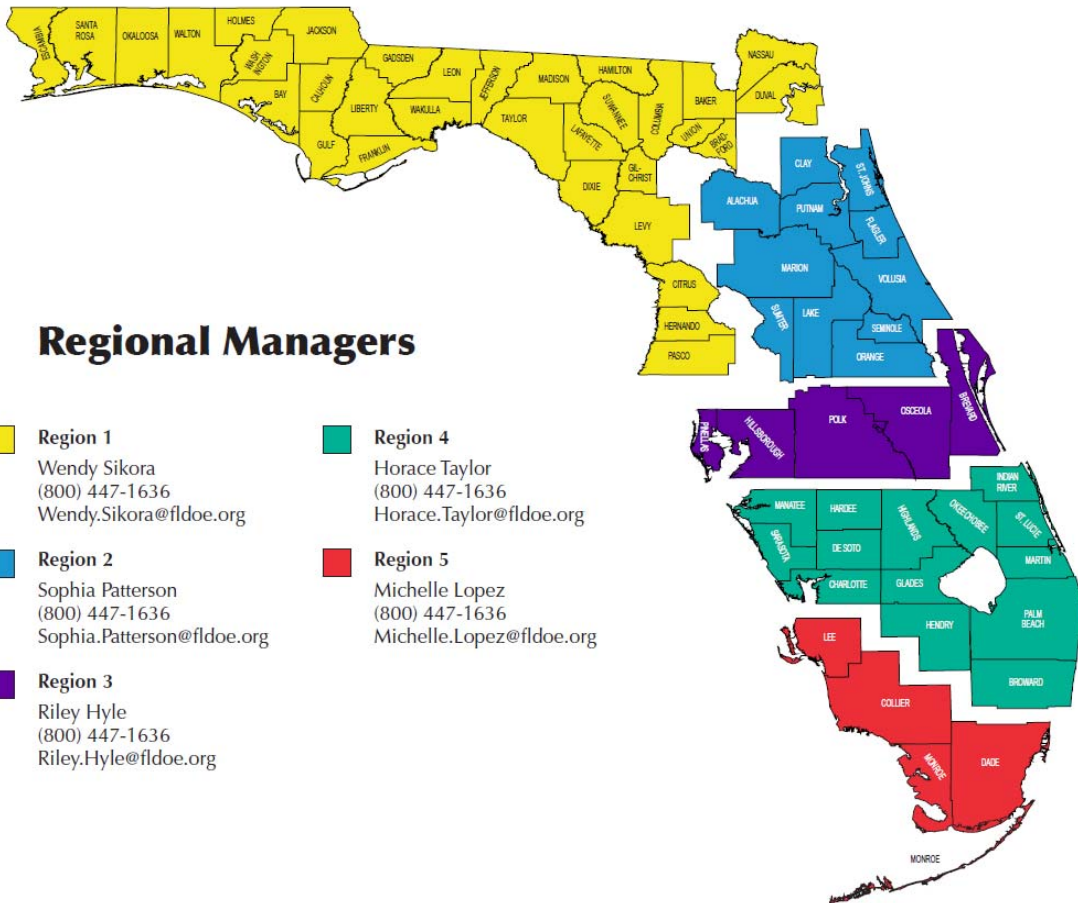


Florida Department of Education

**"Improving K-12 Educational  
Choice Options"**

ON THE WEB AT: [WWW.FLORIDASCHOOLCHOICE.ORG](http://WWW.FLORIDASCHOOLCHOICE.ORG)

**If you need assistance. . . Please contact the Regional Manager for your district, or our Customer Service Supervisor, Pam London, at (850) 245-0761.**



## Regional Managers

- |   |  |
|---|--|
| <p><span style="color: yellow;">■</span> <b>Region 1</b><br/>Wendy Sikora<br/>(800) 447-1636<br/><a href="mailto:Wendy.Sikora@fldoe.org">Wendy.Sikora@fldoe.org</a></p> <p><span style="color: blue;">■</span> <b>Region 2</b><br/>Sophia Patterson<br/>(800) 447-1636<br/><a href="mailto:Sophia.Patterson@fldoe.org">Sophia.Patterson@fldoe.org</a></p> <p><span style="color: purple;">■</span> <b>Region 3</b><br/>Riley Hyle<br/>(800) 447-1636<br/><a href="mailto:Riley.Hyle@fldoe.org">Riley.Hyle@fldoe.org</a></p> | <p><span style="color: green;">■</span> <b>Region 4</b><br/>Horace Taylor<br/>(800) 447-1636<br/><a href="mailto:Horace.Taylor@fldoe.org">Horace.Taylor@fldoe.org</a></p> <p><span style="color: red;">■</span> <b>Region 5</b><br/>Michelle Lopez<br/>(800) 447-1636<br/><a href="mailto:Michelle.Lopez@fldoe.org">Michelle.Lopez@fldoe.org</a></p> |
|---|--|

**Interested in back issues?** Current and previous newsletters are available in PDF format on the School Choice Web site when logged in as a district administrator. Click on the "Newsletters" link in the General Information section.