

Office of Independent Education & Parental Choice

325 West Gaines Street • Suite 522 • Tallahassee, FL • 32399-0400 • 850/245-0502 • www.floridaschoolchoice.org

Home Education in Florida

ANNUAL REPORT 2010-2011

Office of Independent Education and Parental Choice
Florida Department of Education

June 2011

Improving K-12 Educational Choice Options

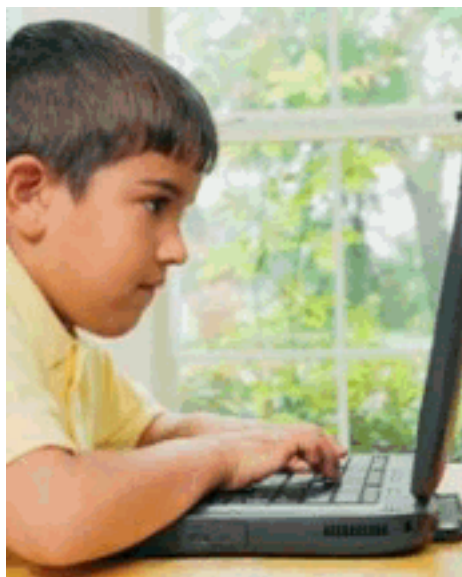
Home Education in Florida

Established by the Florida Legislature as a school choice option in 1985, home education is defined in Section 1002.01, F.S., as “the sequentially progressive instruction of a student directed by his or her parent.” Section 1002.41, F.S., requires parents to notify the district school superintendent in the county of residence of their intent to establish and maintain a home education program and to provide the name, address, and birth date of each student participating.

Florida’s home education law does not require a particular educational background for parents or standard curricula for students. However, a portfolio of records and materials showing student work must be maintained and made available to the school district if requested in writing. Additionally, Section 1002.41, F.S. requires that students in home education programs must annually undergo one of five academic evaluation options, the results of which must be submitted to the district school superintendent.

Each year, the Department of Education surveys all school districts to determine the number of students and families who have registered their intent to establish home education programs. For the 2010-2011 school year, the numbers provided by the districts indicate that the statewide roster of home education totals 48,254 families, accounting for 69,281 students. Over the past ten years, the total number of students participating in the Home Education programs has increased by more than 28,000 students, which is an increase of 68%.

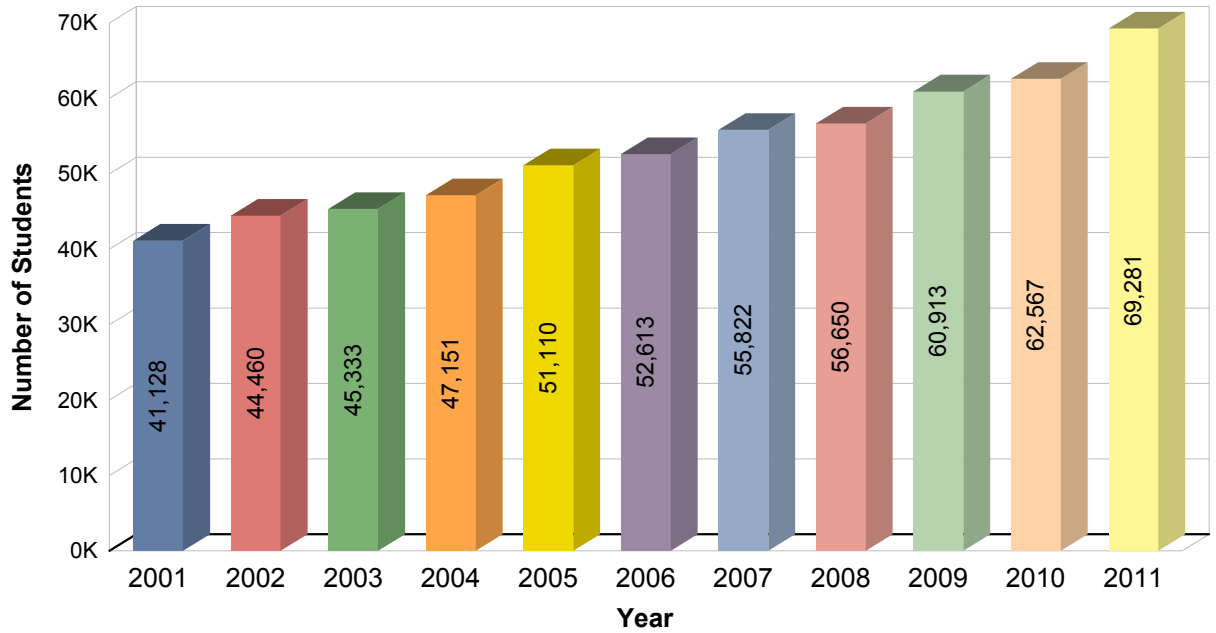
For more information on home education in Florida, please visit the the Web site of the Florida Department of Education Office of Independent Education and Parental Choice at http://www.floridaschoolchoice.org/information/home_education/.



**HOME EDUCATION STATISTICS BY DISTRICT
2010-2011**

<u>DISTRICT ID</u>	<u>DISTRICT NAME</u>	<u>STUDENTS</u>	<u>FAMILIES</u>
1	Alachua	1,080	800
2	Baker	162	121
3	Bay	869	636
4	Bradford	141	117
5	Brevard	3,350	2,357
6	Broward	3,357	2,183
7	Calhoun	56	33
8	Charlotte	468	336
9	Citrus	826	636
10	Clay	1,101	846
11	Collier	932	627
12	Columbia	686	259
13	Dade	3,087	2,279
14	DeSoto	205	125
15	Dixie	57	46
16	Duval	5,194	3,824
17	Escambia	1,665	1,173
18	Flagler	553	370
19	Franklin	31	29
20	Gadsden	533	329
21	Gilchrest	171	124
22	Glades	43	35
23	Gulf	75	56
24	Hamilton	90	67
25	Hardee	82	55
26	Hendry	109	76
27	Hernando	863	590
28	Highlands	304	205
29	Hillsborough	4,603	3,159
30	Holmes	103	78
31	Indian River	680	473
32	Jackson	289	207
33	Jefferson	189	106
34	Lafayette	46	32
35	Lake	1,775	1,281
36	Lee	1,277	836
37	Leon	1,024	696
38	Levy	292	234
39	Liberty	12	10
40	Madison	86	78
41	Manatee	938	768
42	Marion	1,881	1,339
43	Martin	621	450
44	Monroe	225	137
45	Nassau	616	430
46	Okaloosa	967	661
47	Okeechobee	248	170
48	Orange	3,505	2,528
49	Osceola	1,189	823
50	Palm Beach	4,834	3,553
51	Pasco	1,804	1,108
52	Pinellas	2,640	1,851
53	Polk	3,641	2,044
54	Putnam	283	194
55	St. Johns	1,062	701
56	St. Lucie	1,034	770
57	Santa Rosa	1,193	644
58	Sarasota	955	697
59	Seminole	1,775	1,321
60	Sumter	266	177
61	Suwannee	437	320
62	Taylor	219	162
63	Union	88	78
64	Volusia	1,830	1,390
65	Wakulla	190	143
66	Walton	277	200
67	Washington	97	71
STATE TOTAL:		69,281	48,254

Student Enrollment in Home Education Programs, 2001-2011

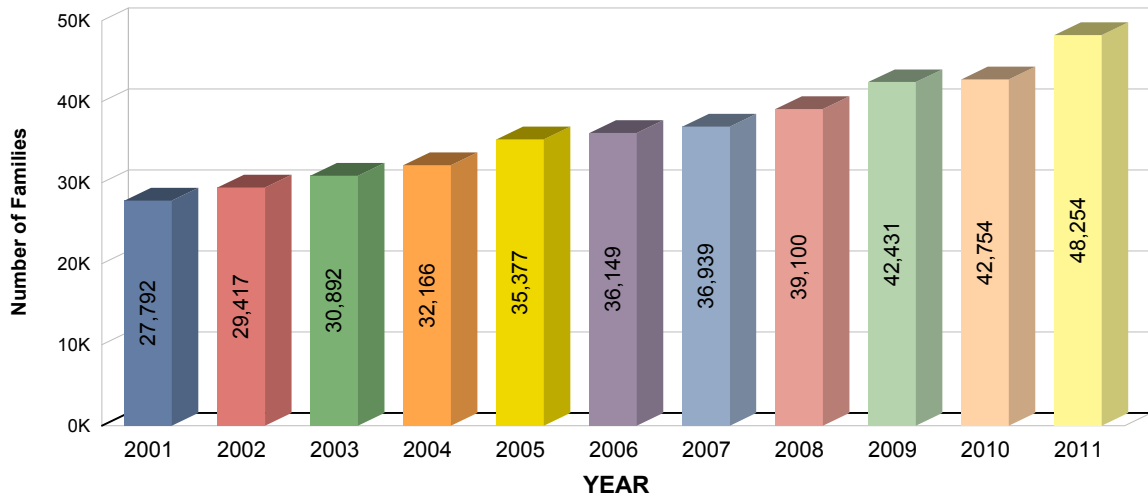


<u>School Year</u>	<u>Students</u>	<u>Growth</u>	<u>% Increase</u>
2011	69,281	6,714	10.7%
2010	62,567	1,654	2.7%
2009	60,913	4,263	7.5%
2008	56,650	828	1.5%
2007	55,822	3,209	6.1%
2006	52,613	1,503	2.9%
2005	51,110	3,959	8.4%
2004	47,151	1,818	4.0%
2003	45,333	873	2.0%
2002	44,460	3,332	8.1%
2001	41,128		

Districts with the Most Home Education Students 2010-2011

<u>District Name</u>	<u>Students</u>	<u>%</u>	<u>Families</u>	<u>%</u>
Duval	5,194	7.5%	3,824	7.9%
Palm Beach	4,834	7.0%	3,553	7.4%
Hillsborough	4,603	6.6%	3,159	6.5%
Polk	3,641	5.3%	2,044	4.2%
Orange	3,505	5.1%	2,528	5.2%
Broward	3,357	4.8%	2,183	4.5%
Brevard	3,350	4.8%	2,357	4.9%
Dade	3,087	4.5%	2,279	4.7%
Pinellas	2,640	3.8%	1,851	3.8%
Marion	1,881	2.7%	1,339	2.8%

Families in Home Education Programs, 2001-2011



<u>Year</u>	<u>Families</u>	<u>% Increase</u>
2011	48,254	12.9%
2010	42,754	0.8%
2009	42,431	8.5%
2008	39,100	5.9%
2007	36,939	2.2%
2006	36,149	2.2%
2005	35,377	10.0%
2004	32,166	4.1%
2003	30,892	5.0%
2002	29,417	5.8%
2001	27,792	