



Statistical Brief

Bureau of Education Information & Accountability Services

Series 2003-26B

July 2003

Florida's Nonpublic Schools 2002-03

A nonpublic school is defined in Section 1002.01(2), Florida Statutes, as “***an individual, association, copartnership, or corporation or a department, division, or section of such organizations, that designates itself as an educational center that includes kindergarten or a higher grade...below college level....***” Throughout this report and relevant legislation, the terms *nonpublic* and *private* are used interchangeably. Private elementary and secondary schools in Florida are not licensed, approved, accredited or regulated by the state, but they are required to make their existence known to the Department of Education and respond to an annual survey designed to elicit information about them for public inspection. While survey respondents identify private schools for directory information purposes, in this report no differentiations are made between religious, nonreligious, military, nonprofit or proprietary schools. All responses to the 2002-03 school year survey are included. Of the 2,108 known nonpublic schools, 226 are prekindergarten centers; 9 are other; 30 are specific exceptionality schools; 1,035 are elementary schools reporting student enrollment in one or more of the grades K-8; 147 are secondary schools reporting student enrollment only in one or more of the grades 9-12; and 661 are K-12 schools (elementary and secondary). Enrollment is reported by the survey respondents only as grade level totals, or as multigraded/ungraded totals, not by race or gender category.

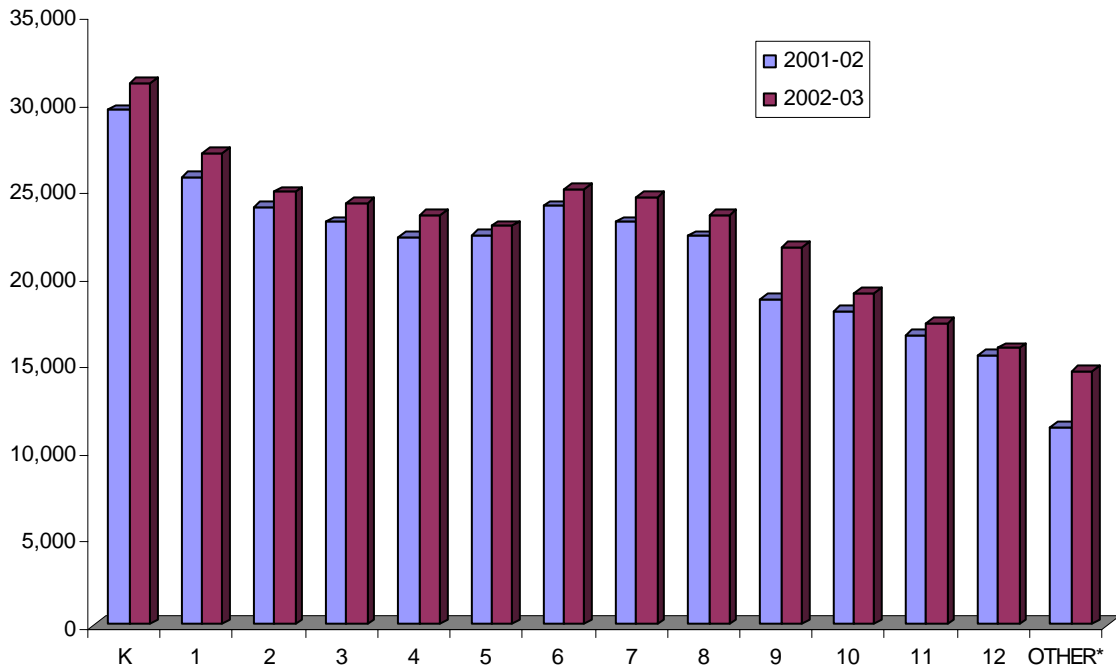
Figure 1 shows the reported nonpublic school enrollment by grade for school years 2001-02 and 2002-03.

PAGE**INSIDE THIS ISSUE**

- 4 Table 1, Instructional and Administrative Personnel
- 5 Table 2, Student Enrollment by Grade
- 6 Table 3, Distribution of Students
- 7 Table 4, Postsecondary Plans of Graduates
- 8 Table 5, Ten-Year Student Distribution
- 9 Table 6, Nonpublic Schools Count

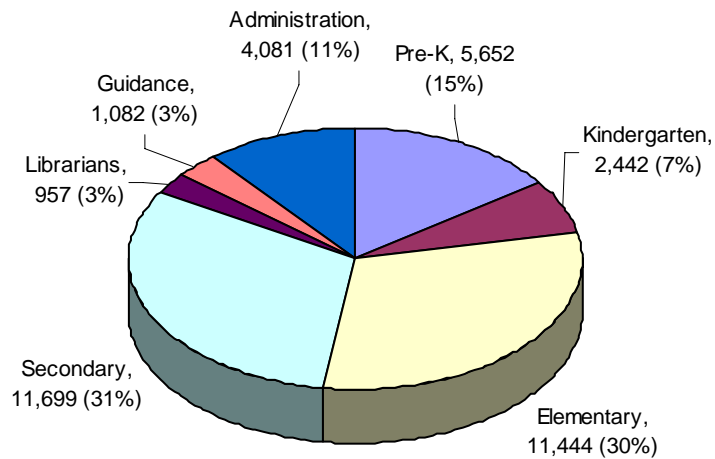
Education
Information and
Accountability
Services

Figure 1
REPORTED STUDENT ENROLLMENT
FOR NONPUBLIC SCHOOLS
2001-02 AND 2002-03
BY GRADE



**Other" shows enrollment submitted by a school as a total number, not separated by grade.

Figure 2
NONPUBLIC SCHOOLS: REPORTED NUMBERS OF
INSTRUCTIONAL AND ADMINISTRATIVE PERSONNEL TYPES



Total Nonpublic Instructional and Administrative Personnel Types: 37,357

Figure 2 shows the reported numbers of nonpublic schools' instructional and administrative personnel types. The Nonpublic School Data Base Survey collects information on seven personnel types: prekindergarten instructors, kindergarten instructors, elementary teachers (grades 1-6), secondary teachers (grades 7-12), librarians and media specialists, guidance personnel, and administrators. Information was not collected on support personnel such as secretaries, aides and paraprofessionals, and volunteers. Statistics for personnel in the named areas reflect actual numbers of such individuals but do not indicate the full range of functions they may perform. Reporting instructions requested that full-time employees who have responsibilities in more than one area be reported in the category where they spend the majority of their time. The survey does not differentiate between full-time and part-time personnel or the percentage of full-time employment represented by any part-time individual.

Tables 1 through 6 are county-by-county displays of the data. A county is not listed in the tables if there is no nonpublic school membership reported for that county.

Table 1 is a summary of the seven types of instructional and administrative personnel in nonpublic schools.

Tables 2 through 6 provide information on students in nonpublic schools in the following formats:

- **Table 2** shows reported nonpublic school enrollment for 2002-03 by grade.
- **Table 3** shows the aggregate number and percent of student enrollment by county in both public and nonpublic schools.
- **Table 4** shows the number of 2002 nonpublic high school graduates and the number who planned to pursue a postsecondary education grouped by the types of institutions in which they intended to enroll.
- **Table 5** shows the percentage of the total school-age population in public and nonpublic schools over the ten-year period from 1993-94 through 2002-03. During this period, the percentage of students enrolled in nonpublic schools increased from 9.93 to 12.94, and the annual PK-12 enrollment total increased by 23,160 students. Prekindergarten enrollments of 62,257 reported from registered daycare centers and nonpublic schools are included.
- **Table 6** counts nonpublic schools as they are listed in the 2002-03 Directory of Nonpublic Schools. Survey respondents designate their schools as Prekindergarten, Elementary K-8, Secondary 9-12, All Grades K-12, Special Needs ESE/Other by the grade level of the majority of their students. The 226 predominantly prekindergarten sites are shown on this table because they report enrollment and are listed in the Directory of Nonpublic Schools.

**Table 1
NONPUBLIC SCHOOLS:
NUMBERS OF INSTRUCTIONAL AND ADMINISTRATIVE PERSONNEL
2002-03**

District	Pre-K	Kindergarten	Elementary	Secondary	Librarians	Guidance	Administration	Total
ALACHUA	85	30	119	107	10	10	55	416
BAKER	0	0	0	2	0	0	2	4
BAY	42	11	47	53	6	5	20	184
BRADFORD	0	1	5	4	0	1	2	13
BREVARD	124	73	293	300	26	36	96	948
BROWARD	541	217	1,085	1,179	109	110	425	3,666
CALHOUN	0	1	1	1	0	0	1	4
CHARLOTTE	22	13	42	21	5	2	18	123
CITRUS	14	8	35	34	5	4	10	110
CLAY	45	22	133	131	11	8	50	400
COLLIER	94	22	145	130	12	13	41	457
COLUMBIA	5	7	19	14	2	3	7	57
MIAMI-DADE	1,586	465	1,737	1,794	169	209	766	6,726
DESOTO	0	0	3	6	1	0	2	12
DUVAL	365	174	781	1,013	65	140	354	2,892
ESCAMBIA	98	52	248	195	19	21	64	697
FLAGLER	5	4	11	4	1	2	5	32
FRANKLIN	2	1	3	0	0	0	1	7
GADSDEN	3	2	16	18	1	2	3	45
GILCHRIST	2	1	3	13	1	2	3	25
GLADES	0	0	0	2	0	0	1	3
GULF	5	1	6	3	1	1	1	18
HAMILTON	3	2	3	2	0	0	3	13
HARDEE	0	0	3	1	0	1	2	7
HENDRY	13	2	11	3	0	0	3	32
HERNANDO	34	13	45	28	3	5	11	139
HIGHLANDS	12	7	33	19	5	4	11	91
HILLSBOROUGH	427	171	771	730	70	70	299	2,538
HOLMES	1	1	2	5	1	1	3	14
INDIAN RIVER	14	11	74	20	11	4	20	154
JACKSON	3	2	10	10	1	0	4	30
JEFFERSON	3	3	9	14	1	0	5	35
LAKE	52	22	119	145	6	10	62	416
LEE	149	84	339	374	20	23	121	1,110
LEON	123	37	191	166	14	13	77	621
LEVY	1	1	2	2	1	1	3	11
MADISON	1	1	6	2	1	0	3	14
MANATEE	37	36	186	260	9	13	63	604
MARION	56	36	170	160	11	15	47	495
MARTIN	30	14	80	57	8	3	23	215
MONROE	21	9	33	22	2	2	14	103
NASSAU	26	10	43	34	4	2	11	130
OKALOOSA	54	19	74	51	7	9	22	236
OKEECHOBEE	4	4	21	19	1	3	6	58
ORANGE	380	178	1,314	1,545	55	70	276	3,818
OSCEOLA	46	19	95	47	6	5	31	249
PALM BEACH	357	215	954	997	87	75	336	3,021
PASCO	39	24	111	91	12	6	41	324
PINELLAS	197	130	711	658	57	71	240	2,064
POLK	80	43	218	208	22	23	69	663
PUTNAM	5	8	27	37	3	6	16	102
ST. JOHNS	67	16	61	59	4	8	24	239
ST. LUCIE	48	27	136	135	6	11	32	395
SANTA ROSA	15	4	13	23	3	3	12	73
SARASOTA	59	53	258	273	15	20	66	744
SEMINOLE	144	76	357	260	29	19	108	993
SUMTER	0	5	5	5	0	0	4	19
SUWANNEE	7	4	13	13	0	1	6	44
TAYLOR	0	1	0	1	0	0	1	3
UNION	2	0	2	2	1	1	1	9
VOLUSIA	102	47	204	189	37	15	73	667
WAKULLA	0	0	1	2	0	0	1	4
WALTON	2	2	7	6	0	0	4	21
TOTAL	5,652	2,442	11,444	11,699	957	1,082	4,081	37,357

**Table 2
NONPUBLIC SCHOOLS STUDENT ENROLLMENT BY GRADE
2002-03**

DISTRICT	PK	K	1	2	3	4	5	6	7	8	9	10	11	12	Other*	Total
ALACHUA	934	359	269	241	265	235	232	210	203	183	144	125	101	113	111	3,725
BAKER	0	0	0	0	0	0	0	0	0	0	0	0	0	0	13	13
BAY	429	135	132	114	104	112	96	118	107	107	67	42	35	47	14	1,659
BRADFORD	0	2	4	1	4	3	1	6	4	4	6	3	2	3	1	44
BREVARD	1,444	839	749	717	660	687	696	690	759	751	631	586	495	428	187	10,319
BROWARD	6,891	3,377	3,036	2,869	2,766	2,687	2,637	3,003	2,954	2,820	3,136	2,832	2,709	2,375	818	44,910
CALHOUN	0	1	2	0	3	0	1	1	0	1	2	0	0	0	0	11
CHARLOTTE	266	154	161	132	119	114	117	89	86	79	35	41	32	22	0	1,447
CITRUS	181	93	90	93	77	75	54	78	66	65	41	50	28	20	16	1,027
CLAY	475	314	239	230	225	200	237	227	255	235	892	889	841	680	629	6,568
COLLIER	852	385	320	281	294	300	240	276	269	215	163	140	150	116	272	4,273
COLUMBIA	13	32	32	24	30	31	20	44	24	22	12	14	9	8	0	315
MIAMI-DADE	16,801	5,845	4,477	3,941	3,819	3,736	3,630	4,265	3,992	3,914	3,851	3,606	3,285	3,097	5,404	73,663
DESOTO	0	1	3	2	1	3	2	3	3	2	2	6	9	19	1	57
DUVAL	3,774	2,282	1,849	1,761	1,688	1,625	1,668	2,100	2,181	2,076	1,954	1,640	1,356	1,204	1,284	28,442
ESCAMBIA	990	896	710	601	570	520	514	583	533	490	337	323	280	315	236	7,898
FLAGLER	78	64	44	45	36	34	29	26	25	9	5	6	3	5	0	409
FRANKLIN	19	11	7	5	10	4	4	7	0	0	0	0	0	0	0	67
GADSDEN	39	37	37	38	44	42	37	40	53	39	39	38	33	40	20	576
GILCHRIST	17	7	4	9	4	6	4	2	53	51	38	28	26	10	0	259
GLADES	0	0	0	0	0	0	0	0	0	0	17	2	3	0	0	22
GULF	45	12	15	9	5	7	4	3	10	2	0	0	0	0	2	114
HAMILTON	25	1	0	1	1	0	1	1	4	0	0	0	0	0	40	74
HARDEE	0	1	2	1	0	1	2	0	0	0	0	0	0	0	10	17
HENDRY	111	33	27	29	23	24	13	21	15	15	6	3	5	5	0	330
HERNANDO	368	171	151	123	131	125	131	114	104	93	61	36	37	34	4	1,683
HIGHLANDS	121	84	75	59	62	69	54	47	50	53	60	37	26	44	8	849
HILLSBOROUGH	4,382	2,157	1,986	1,840	1,725	1,666	1,508	1,746	1,595	1,531	1,229	1,106	918	965	579	24,933
HOLMES	3	0	6	1	7	7	3	5	5	10	21	19	16	7	0	110
INDIAN RIVE	223	151	127	114	120	119	131	122	142	151	82	75	85	84	22	1,748
JACKSON	33	19	23	16	10	5	14	21	7	8	4	4	2	1	99	266
JEFFERSON	21	23	21	23	25	21	12	25	28	27	21	18	19	23	6	313
LAKE	624	353	288	267	246	247	268	296	237	231	214	147	133	126	170	3,847
LEE	1,597	789	659	602	570	566	560	574	613	566	495	476	433	368	206	9,074
LEON	1,284	490	422	402	417	408	379	400	414	387	281	220	193	187	99	5,983
LEVY	6	8	5	8	6	17	9	8	12	18	12	6	5	6	0	126
MADISON	17	19	20	18	19	22	15	37	41	43	60	18	9	4	11	353
MANATEE	421	368	308	308	298	266	306	297	322	326	272	291	263	286	71	4,403
MARION	641	456	389	357	351	359	344	391	411	414	374	349	245	150	9	5,240
MARTIN	475	212	206	183	199	185	182	211	180	132	42	37	34	29	116	2,423
MONROE	243	75	58	53	45	42	48	47	44	39	35	26	10	12	0	777
NASSAU	257	102	94	77	68	48	55	46	51	37	19	25	14	39	44	976
OKALOOSA	569	305	227	206	199	187	194	158	154	173	139	107	94	79	125	2,916
OKEECHOBEE	54	39	21	30	25	19	12	8	13	13	10	10	4	4	5	267
ORANGE	3,914	2,461	2,136	1,969	1,901	1,812	1,734	1,863	1,982	1,827	1,473	1,280	1,321	1,102	1,627	28,402
OSCEOLA	746	318	307	280	257	262	228	230	182	195	105	83	60	70	45	3,368
PALM BEACH	4,163	2,471	2,433	2,219	2,236	2,223	2,096	2,150	2,079	1,997	1,520	1,432	1,394	1,277	200	29,890
PASCO	494	303	257	253	229	219	209	208	193	187	77	94	79	64	71	2,937
PINELLAS	2,353	1,593	1,567	1,469	1,540	1,511	1,521	1,560	1,522	1,421	1,633	937	872	803	878	21,180
POLK	979	652	670	607	609	573	556	599	626	553	426	394	362	296	32	7,934
PUTNAM	70	70	48	44	44	34	46	53	58	61	64	40	26	23	13	694
ST. JOHNS	573	228	198	174	168	163	151	141	108	102	101	63	78	65	168	2,481
ST. LUCIE	529	270	245	219	239	219	224	229	237	242	300	254	198	198	45	3,648
SANTA ROSA	242	66	51	37	33	34	33	33	41	44	56	44	37	34	14	799
SARASOTA	712	437	452	389	410	451	467	499	454	443	417	370	330	359	222	6,412
SEMINOLE	1,654	940	837	840	767	732	674	647	577	578	337	331	302	297	221	9,734
SUMTER	2	2	1	7	0	4	5	10	4	7	2	2	3	3	0	52
SUWANNEE	60	35	32	26	24	21	28	14	17	27	24	25	9	9	0	351
TAYLOR	1	1	0	0	0	3	1	3	0	1	1	0	1	0	0	12
UNION	6	0	4	5	3	0	3	6	0	1	5	5	0	0	0	38
VOLUSIA	1,021	582	550	484	478	450	470	461	490	472	350	281	291	322	378	7,080
WAKULLA	0	0	2	1	2	1	2	2	5	2	3	2	3	0	0	25
WALTON	15	11	12	4	8	9	11	18	10	9	7	9	6	9	0	138
TOTAL	62,257	31,142	27,097	24,858	24,219	23,545	22,923	25,072	24,604	23,501	21,710	19,027	17,314	15,886	14,546	377,701

**Table 3
DISTRIBUTION OF STUDENTS IN PUBLIC AND NONPUBLIC SCHOOLS
2002-03**

District	Public School Membership PK-12		Nonpublic School Enrollment Pk-12	
	Number	Percent of Total	Number	Percent of Total
ALACHUA	29,364	88.74	3,725	11.26
BAKER	4,521	99.71	13	0.29
BAY	26,466	94.10	1,659	5.90
BRADFORD	4,032	98.92	44	1.08
BREVARD	72,622	87.56	10,319	12.44
BROWARD	268,005	85.65	44,910	14.35
CALHOUN	2,173	99.50	11	0.50
CHARLOTTE	17,744	92.46	1,447	7.54
CITRUS	15,364	93.73	1,027	6.27
CLAY	29,874	81.98	6,568	18.02
COLLIER	38,130	89.92	4,273	10.08
COLUMBIA	9,709	96.86	315	3.14
MIAMI-DADE	373,468	83.53	73,663	16.47
DESOTO	4,921	98.85	57	1.15
DIXIE	2,231	100.00	0	0.00
DUVAL	128,193	81.84	28,442	18.16
ESCAMBIA	43,905	84.75	7,898	15.25
FLAGLER	7,605	94.90	409	5.10
FRANKLIN	1,343	95.25	67	4.75
GADSDEN	7,208	92.60	576	7.40
GILCHRIST	2,737	91.36	259	8.64
GLADES	1,000	97.85	22	2.15
GULF	2,164	95.00	114	5.00
HAMILTON	2,065	96.54	74	3.46
HARDEE	5,178	99.67	17	0.33
HENDRY	7,675	95.88	330	4.12
HERNANDO	18,615	91.71	1,683	8.29
HIGHLANDS	11,434	93.09	849	6.91
HILLSBOROUGH	175,463	87.56	24,933	12.44
HOLMES	3,414	96.88	110	3.12
INDIAN RIVER	15,996	90.15	1,748	9.85
JACKSON	7,245	96.46	266	3.54
JEFFERSON	1,575	83.42	313	16.58
LAFAYETTE	1,050	100.00	0	0.00
LAKE	31,788	89.20	3,847	10.80
LEE	63,222	87.45	9,074	12.55
LEON	31,893	84.20	5,983	15.80
LEVY	6,115	97.98	126	2.02
LIBERTY	1,387	100.00	0	0.00
MADISON	3,311	90.37	353	9.63
MANATEE	39,119	89.88	4,403	10.12
MARION	39,721	88.35	5,240	11.65
MARTIN	17,273	87.70	2,423	12.30
MONROE	9,205	92.22	777	7.78
NASSAU	10,526	91.51	976	8.49
OKALOOSA	30,989	91.40	2,916	8.60
OKEECHOBEE	7,092	96.37	267	3.63
ORANGE	158,739	84.82	28,402	15.18
OSCEOLA	40,518	92.33	3,368	7.67
PALM BEACH	164,966	84.66	29,890	15.34
PASCO	55,025	94.93	2,937	5.07
PINELLAS	114,884	84.43	21,180	15.57
POLK	82,178	91.20	7,934	8.80
PUTNAM	12,492	94.74	694	5.26
ST. JOHNS	21,950	89.84	2,481	10.16
ST. LUCIE	31,557	89.64	3,648	10.36
SANTA ROSA	23,664	96.73	799	3.27
SARASOTA	38,054	85.58	6,412	14.42
SEMINOLE	63,460	86.70	9,734	13.30
SUMTER	6,561	99.21	52	0.79
SUWANNEE	5,806	94.30	351	5.70
TAYLOR	3,597	99.67	12	0.33
UNION	2,175	98.28	38	1.72
VOLUSIA	62,895	89.88	7,080	10.12
WAKULLA	4,666	99.47	25	0.53
WALTON	6,305	97.86	138	2.14
WASHINGTON	3,415	100.00	0	0.00
DEAF/BLIND	717	100.00	0	0.00
DOZIER/OKEEC	427	100.00	0	0.00
FAU LAB SCH	495	100.00	0	0.00
FSU LAB SCH	1,494	100.00	0	0.00
FAMU LAB SCH	467	100.00	0	0.00
UF LAB SCH	1,177	100.00	0	0.00
TOTAL	2,541,814	87.06	377,701	12.94

Table 4
POSTSECONDARY PLANS INDICATED BY
GRADUATES FROM NONPUBLIC HIGH SCHOOLS
SPRING 2002

DISTRICT	TOTAL GRADUATES	FLORIDA COMMUNITY COLLEGES		FLORIDA UNIVERSITIES/COLLEGES		OUT-OF-STATE COLLEGES AND UNIVERSITY	TECHNICAL, TRADE AND OTHER SCHOOLS	
		PUBLIC	PRIVATE	PUBLIC	PRIVATE		IN-STATE	OUT-OF-STATE
ALACHUA	98	23	6	22	6	30	2	0
BAKER	0	0	0	0	0	0	0	0
BAY	48	27	0	0	0	3	2	0
BRADFORD	1	0	0	0	0	0	0	0
BREVARD	426	149	9	104	56	74	3	3
BROWARD	2,392	442	17	986	281	550	12	1
CALHOUN	2	0	0	0	0	0	0	0
CHARLOTTE	14	3	0	4	2	3	1	0
CITRUS	23	5	0	6	5	7	0	0
CLAY	450	29	5	43	14	40	1	3
COLLIER	187	27	0	40	21	58	6	7
COLUMBIA	12	4	0	0	0	1	0	0
MIAMI-DADE	4,173	723	12	1,131	352	940	47	70
DESOTO	4	0	0	0	0	5	0	0
DUVAL	1,467	348	3	328	100	274	9	9
ESCAMBIA	294	67	0	62	50	90	3	1
FLAGLER	2	2	0	0	0	0	0	0
FRANKLIN	0	0	0	0	0	0	0	0
GADSDEN	30	12	0	6	0	6	0	0
GILCHRIST	7	30	0	2	2	5	0	2
GLADES	0	0	0	0	0	0	0	0
GULF	0	0	0	0	0	0	0	0
HAMILTON	0	0	0	0	0	0	0	0
HARDEE	0	0	0	0	0	0	0	0
HENDRY	0	0	0	0	0	0	0	0
HERNANDO	32	8	0	6	14	2	0	1
HIGHLANDS	25	13	7	1	1	7	2	0
HILLSBOROUGH	940	122	13	381	104	245	3	2
HOLMES	9	0	1	0	0	0	0	0
INDIAN RIVER	67	4	0	18	9	34	0	0
JACKSON	4	2	0	1	1	0	0	0
JEFFERSON	18	6	0	11	0	0	0	0
LAKE	99	39	0	12	9	18	4	2
LEE	376	72	0	119	41	83	0	1
LEON	1,083	60	0	57	10	63	2	0
LEVY	3	0	0	0	0	0	0	0
MADISON	0	0	0	0	0	0	0	0
MANATEE	191	38	1	24	15	120	1	1
MARION	159	56	3	16	10	10	0	2
MARTIN	33	12	0	0	11	3	0	0
MONROE	12	1	0	2	4	3	2	0
NASSAU	34	15	0	2	2	5	5	2
OKALOOSA	96	38	1	7	14	13	2	0
OKEECHOBEE	7	0	0	0	0	0	0	0
ORANGE	1,018	225	2	293	119	244	5	3
OSCEOLA	53	24	1	1	6	6	0	0
PALM BEACH	1,180	268	9	361	134	327	10	0
PASCO	69	16	2	14	7	17	0	0
PINELLAS	1,197	193	3	279	74	140	8	3
POLK	319	81	1	42	51	68	3	1
PUTNAM	29	11	0	0	0	3	1	0
ST. JOHNS	109	35	3	23	15	13	1	2
ST. LUCIE	181	92	0	29	24	18	0	3
SANTA ROSA	31	6	4	2	6	3	0	0
SARASOTA	243	64	1	74	40	53	7	2
SEMINOLE	313	52	33	99	36	82	0	0
SUMTER	6	2	0	0	0	0	0	0
SUWANNEE	14	5	0	0	1	0	1	1
TAYLOR	0	0	0	0	0	0	0	0
UNION	0	0	0	0	0	0	0	0
VOLUSIA	222	86	0	44	30	24	3	0
WAKULLA	0	0	0	0	0	0	0	0
WALTON	5	0	1	0	1	2	0	0
TOTAL	17,807	3,537	138	4,652	1,678	3,692	146	122

Table 5
DISTRIBUTION OF STUDENTS OVER A TEN-YEAR PERIOD

Year	<i>Total Reported (Nonpublic and Public) Enrollment</i>	<i>Public School PK-12 Enrollment</i>		<i>Nonpublic School PK-12 Enrollment</i>	
		Number	Percent	Number	Percent
1993-94	2,227,240	2,005,970	90.07	221,270	9.93
1994-95	2,298,752	2,064,884	89.83	233,868	10.17
1995-96	2,420,462	2,175,233	89.87	245,229	10.13
1996-97	2,446,044	2,188,239	89.47	257,805	10.54
1997-98	2,563,647	2,293,093	89.45	270,554	10.55
1998-99	2,610,392	2,335,681	89.48	274,711	10.52
1999-00	2,670,108	2,381,860	89.20	288,248	10.80
2000-01	2,784,625	2,435,889	87.47	348,736	12.52
2001-02	2,856,925	2,502,384	87.59	354,541	12.41
2002-03	2,919,515	2,541,814	87.06	377,701	12.94

**Table 6
NONPUBLIC SCHOOLS COUNT**

DISTRICT	PRE-K	K-12	K-8	9-12	ESE	OTHER	TOTAL
ALACHUA	5	12	12	2	0	0	31
BAKER	0	0	0	1	0	0	1
BAY	0	6	5	0	0	0	11
BRADFORD	0	3	1	0	0	0	4
BREVARD	7	25	28	5	1	0	66
BROWARD	19	39	96	12	3	1	170
CALHOUN	0	1	0	0	0	0	1
CHARLOTTE	0	5	6	0	0	0	11
CITRUS	1	4	3	1	0	0	9
CLAY	2	15	7	2	0	0	26
COLLIER	1	4	16	1	0	0	22
COLUMBIA	0	3	2	0	0	0	5
MIAMI-DADE	94	53	212	26	4	0	389
DESOTO	0	2	1	0	0	0	3
DUVAL	7	54	73	9	3	2	148
ESCAMBIA	0	11	20	1	1	0	33
FLAGLER	1	2	1	0	0	0	4
FRANKLIN	0	0	1	0	0	0	1
GADSDEN	0	1	0	0	1	0	2
GILCHRIST	0	1	1	0	0	0	2
GLADES	0	0	0	1	0	0	1
GULF	0	0	1	0	0	0	1
HAMILTON	1	0	1	1	0	0	3
HARDEE	0	0	2	0	0	0	2
HENDRY	0	1	1	0	0	0	2
HERNANDO	1	5	4	1	0	0	11
HIGHLANDS	0	5	3	0	1	0	9
HILLSBOROUGH	11	47	79	8	0	1	146
HOLMES	0	2	0	0	0	0	2
INDIAN RIVER	0	4	7	1	0	0	12
JACKSON	0	3	0	0	0	0	3
JEFFERSON	0	1	1	0	0	0	2
LAKE	3	17	16	5	0	0	41
LEE	5	23	27	5	1	0	61
LEON	4	9	19	3	1	1	37
LEVY	0	2	0	0	0	0	2
MADISON	0	0	1	0	0	1	2
MANATEE	0	16	12	2	1	0	31
MARION	0	15	18	2	0	0	35
MARTIN	1	2	8	1	0	0	12
MONROE	2	2	4	0	0	0	8
NASSAU	1	6	3	0	0	0	10
OKALOOSA	0	5	9	0	1	0	15
OKEECHOBEE	0	3	0	0	1	0	4
ORANGE	10	47	82	9	0	0	148
OSCEOLA	4	10	8	1	0	0	23
PALM BEACH	16	40	64	9	1	1	131
PASCO	1	14	9	2	0	0	26
PINELLAS	11	36	56	15	1	0	119
POLK	1	13	23	2	3	1	43
PUTNAM	0	8	1	1	1	0	11
ST. JOHNS	2	3	11	4	0	0	20
ST. LUCIE	4	13	7	2	0	0	26
SANTA ROSA	1	5	0	1	0	0	7
SARASOTA	2	16	17	3	2	1	41
SEMINOLE	6	15	32	4	2	0	59
SUMTER	0	2	0	0	0	0	2
SUWANNEE	0	3	1	0	0	0	4
TAYLOR	0	1	0	0	0	0	1
UNION	0	1	0	0	0	0	1
VOLUSIA	2	20	23	4	1	0	50
WAKULLA	0	1	0	0	0	0	1
WALTON	0	4	0	0	0	0	4
TOTAL	226	661	1,035	147	30	9	2,108

**SUMMARY OF NONPUBLIC SCHOOL
SELECTED CHARACTERISTICS
SCHOOL YEAR 2002-03**

Total number of students (PK-12)	377,701
Total number of schools (PK-12)	2,108
Total instructional/ administrative personnel in nonpublic schools (PK-12)	37,357

Percentage of state school age population (PK-12) in nonpublic schools: 12.94%

Counties with at least twelve percent or more of school-age students enrolled in nonpublic schools:

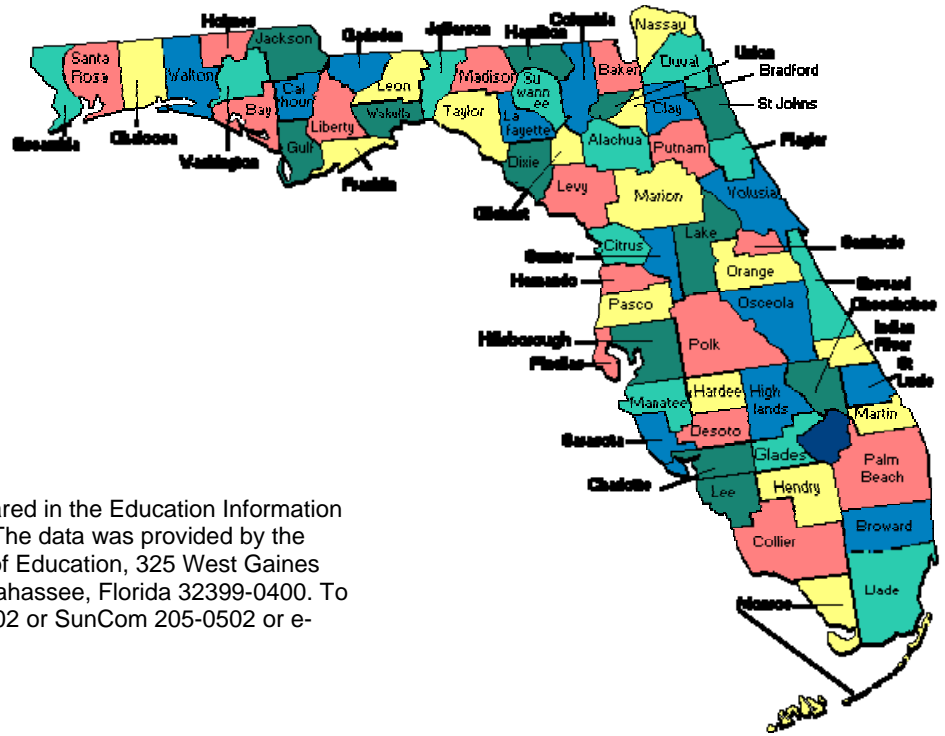
Counties	Percent
Duval	18.16
Clay	18.02
Jefferson	16.58
Miami-Dade	16.47
Leon	15.80
Pinellas	15.57
Palm Beach	15.34
Escambia	15.25
Orange	15.18
Sarasota	14.42
Broward	14.35
Seminole	13.30
Lee	12.55
Brevard	12.44
Hillsborough	12.44
Martin	12.30

Counties with no reported nonpublic schools (PK-12):

Dixie Lafayette Liberty Washington

This page intentionally left blank.

FLORIDA SCHOOL DISTRICTS



This report was designed and prepared in the Education Information and Accountability Services office. The data was provided by the Choice Office, Florida Department of Education, 325 West Gaines Street, 522 Turlington Building, Tallahassee, Florida 32399-0400. To contact the Office call (850) 245-0502 or SunCom 205-0502 or e-mail askeias@fldoe.org.

JIM HORNE, Commissioner
Florida Department of Education
Choice Office
325 W. Gaines Street, 522 Turlington Building
Tallahassee FL 32399-0400

ADDRESS CORRECTION REQUESTED