



Statistical Brief

Bureau of Education Information & Accountability Services

Series 2003-01B

July 2002

Florida's Nonpublic Schools 2001-02

A nonpublic school is defined in Section 229.808, Florida Statutes, as “***an individual, association, copartnership, or corporation or a department, division or section of such an organization, which designates itself as an educational center which includes kindergarten or a higher grade...below college level....***” Throughout this report and its supporting legislation, the terms *nonpublic* and *private* are used interchangeably. Private elementary and secondary schools in Florida are not licensed, approved, accredited or regulated by the state but, they are required to make their existence known to the Department of Education and respond to an annual survey designed to make information about them available to the public. While survey respondents do identify the school and its program by type for directory information purposes, in this report no differentiations are made between religious, nonreligious, military, nonprofit or proprietary schools. All responses to the 2001-02 school year survey are included. Of the 1,860 known nonpublic schools, 222 are prekindergarten centers; 8 are other; 26 are specific exceptionality schools; 976 are elementary schools reporting student enrollment in one or more of the grades K-8; 137 are secondary schools reporting student enrollment only in one or more of the grades 9-12; and 623 are K-12 schools (elementary and secondary). Enrollment is reported by the survey respondents only as grade level totals, or as multigraded/ungraded totals, not by race or gender category.

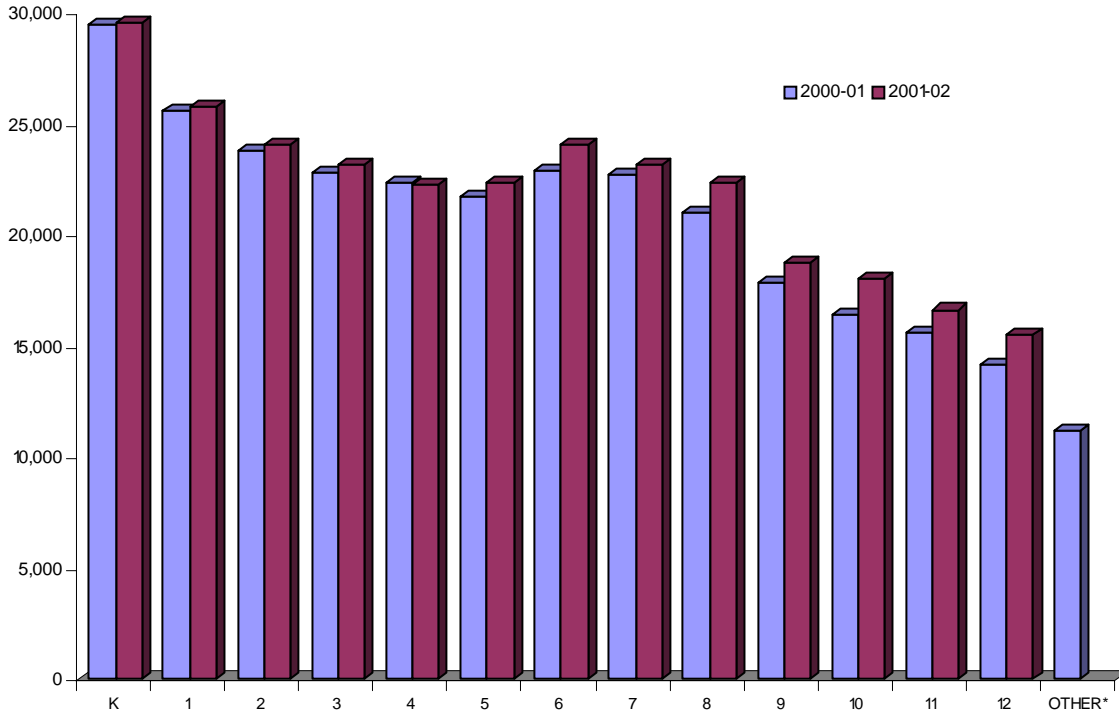
Figure 1 shows the reported nonpublic school enrollment by grade for school years 2000-01 and 2001-02.

PAGE	INSIDE THIS ISSUE
------	-------------------

- | | |
|---|---|
| 2 | Table 1, Instructional and Administrative Personnel |
| 2 | Table 2, Student Enrollment by Grade |
| 3 | Table 3, Distribution of Students |
| 4 | Table 4, Postsecondary Plans of Graduates |
| 6 | Table 5, Ten-Year Student Distribution |
| 7 | Table 6, Nonpublic Schools Count |

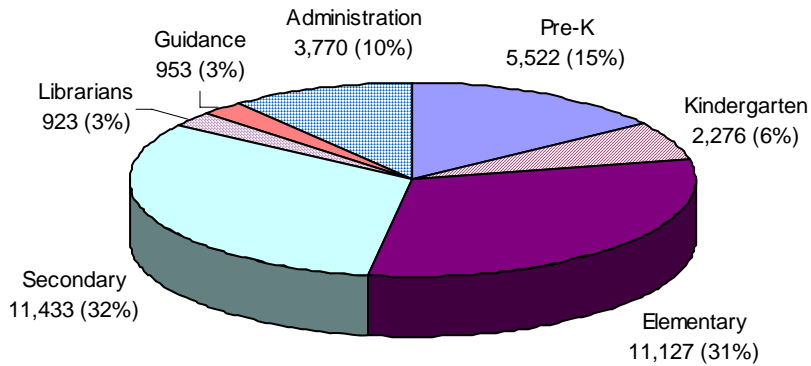
Division of
Public Schools
& Community
Education

Figure 1
REPORTED STUDENT ENROLLMENT
FOR NONPUBLIC SCHOOLS
2000-01 AND 2001-02
BY GRADE



*Other" shows enrollment submitted by a school as a total number, not separated by grade.

Figure 2
NONPUBLIC SCHOOLS: REPORTED NUMBERS OF
INSTRUCTIONAL AND ADMINISTRATIVE PERSONNEL TYPES



Total Nonpublic Instructional and Administrative Personnel Types: 36,004

Figure 2 shows the reported numbers of nonpublic schools instructional and administrative personnel types. The Nonpublic School Data Base Survey collects information on seven personnel types: prekindergarten instructors, kindergarten instructors, elementary teachers (grades 1-6), secondary teachers (grades 7-12), librarians and media specialists, guidance personnel, and administrators. Information was not collected on support personnel such as secretaries, aides and paraprofessionals, and volunteers. Statistics for personnel in the named areas reflect actual numbers of such individuals but do not indicate the full range of functions they may perform. Reporting instructions requested that full-time employees who have responsibilities in more than one area be reported in the category where they spend the majority of their time. The survey does not differentiate between full-time and part-time personnel or the percentage of full-time employment represented by any part-time individual.

Tables 1 through 6 are county by county displays of the data. A county is not listed in the tables if there is no nonpublic school membership reported for that county.

Table 1 is a summary of the seven types of instructional and administrative personnel in nonpublic schools.

Tables 2 through 6 provide information on students in nonpublic schools in the following formats:

- **Table 2** shows reported nonpublic school enrollment for 2001-02 by grade.
- **Table 3** shows the aggregate number and percent of student enrollment by county in both public and nonpublic schools.
- **Table 4** shows the number of 2001 nonpublic high school graduates and the number who planned to pursue a postsecondary education grouped by the types of institutions in which they intended to enroll.
- **Table 5** shows the percentage of the total school-age population in public and nonpublic schools over the ten-year period from 1992-93 through 2001-02. During this period, the percentage of students enrolled in nonpublic schools decreased from 12.52 to 12.41, and the annual PK-12 enrollment total increased by 5,805 students. Prekindergarten enrollments in K3 and K4 classes of 57,607 reported from registered daycare centers and nonpublic schools are included.
- **Table 6** counts nonpublic schools as they are listed in the 2001-02 Directory of Nonpublic Schools. Survey respondents designate their schools as Prekindergarten, Elementary K-8, Secondary 9-12, All Grades K-12, Special Needs ESE/Other by the grade level of the majority of their students. The 222 predominantly prekindergarten sites are shown on this table because they report enrollment and are listed in the Directory of Nonpublic Schools.

Table 1
NONPUBLIC SCHOOLS:
NUMBERS OF INSTRUCTIONAL AND ADMINISTRATIVE PERSONNEL
2001-02

District	Pre-K	Kindergarten	Elementary	Secondary	Librarians	Guidance	Administration	Total
ALACHUA	94	27	118	108	10	9	50	416
BAKER	0	1	5	2	0	0	2	10
BAY	37	12	47	46	6	4	18	170
BRADFORD	0	0	4	3	0	2	2	11
BREVARD	111	75	368	397	29	38	96	1,114
BROWARD	543	209	1,088	1,249	109	102	364	3,664
CALHOUN	0	0	1	1	0	0	1	3
CHARLOTTE	25	16	45	26	6	3	19	140
CITRUS	18	8	34	28	4	3	9	104
CLAY	38	22	120	135	6	6	39	366
COLLIER	78	19	134	111	12	9	37	400
COLUMBIA	3	4	17	13	2	3	8	50
MIAMI-DADE	1,690	419	1,697	1,737	168	189	728	6,628
DESOTO	0	0	2	4	1	0	2	9
DUVAL	310	159	770	935	66	89	321	2,650
ESCAMBIA	95	65	199	167	23	21	56	626
FLAGLER	8	4	10	5	0	1	5	33
FRANKLIN	2	1	3	0	0	0	1	7
GADSDEN	2	3	17	24	1	2	3	52
GILCHRIST	2	1	3	13	1	2	3	25
GLADES	0	0	0	2	0	0	1	3
GULF	4	1	6	3	1	1	1	17
HAMILTON	6	2	6	4	0	0	4	22
HARDEE	2	1	4	3	0	1	3	14
HENDRY	13	2	14	4	1	0	3	37
HERNANDO	34	14	41	30	3	4	12	138
HIGHLANDS	10	6	31	20	4	4	10	85
HILLSBOROUGH	342	148	697	729	65	70	262	2,313
HOLMES	1	1	1	4	0	1	3	11
INDIAN RIVER	13	10	80	91	10	4	29	237
JACKSON	2	2	12	12	1	0	4	33
JEFFERSON	3	4	13	16	1	0	5	42
LAKE	47	23	116	131	5	10	62	394
LEE	143	87	324	369	21	23	112	1,079
LEON	117	34	187	155	18	12	78	601
LEVY	0	1	1	1	0	1	3	7
MADISON	1	1	6	2	1	0	2	13
MANATEE	40	36	157	235	10	8	61	547
MARION	66	35	155	180	12	16	49	513
MARTIN	28	15	74	55	7	3	23	205
MONROE	20	9	35	20	3	4	13	104
NASSAU	24	10	44	23	3	1	8	113
OKALOOSA	26	12	62	59	6	9	17	191
OKEECHOBEE	4	3	10	3	0	3	4	27
ORANGE	369	162	1,057	928	54	56	234	2,860
OSCEOLA	39	18	80	45	6	6	23	217
PALM BEACH	331	187	866	883	78	67	314	2,726
PASCO	66	21	114	75	11	5	42	334
PINELLAS	199	131	752	649	57	56	220	2,064
POLK	67	42	227	245	21	20	76	698
PUTNAM	3	3	25	31	3	6	13	84
ST. JOHNS	69	19	77	70	5	10	28	278
ST. LUCIE	54	19	131	126	6	11	27	374
SANTA ROSA	15	5	14	23	3	3	11	74
SARASOTA	64	40	241	270	15	18	60	708
SEMINOLE	146	70	550	718	27	21	110	1,642
SUMTER	0	3	3	4	0	0	4	14
SUWANNEE	5	4	12	12	0	1	5	39
TAYLOR	0	1	0	1	0	0	1	3
UNION	0	0	0	0	0	0	1	1
VOLUSIA	91	46	213	190	20	15	61	636
WAKULLA	0	0	1	1	0	0	1	3
WALTON	2	3	6	7	1	0	6	25
TOTAL	5,522	2,276	11,127	11,433	923	953	3,770	36,004

**Table 2
NONPUBLIC SCHOOLS STUDENT ENROLLMENT BY GRADE
2001-02**

DISTRICT	PK	K	1	2	3	4	5	6	7	8	9	10	11	12	Other*	Total
ALACHUA	847	294	235	257	235	203	219	166	156	164	109	91	106	87	176	3,345
BAKER	0	4	8	4	5	7	4	4	4	3	0	0	0	0	10	53
BAY	324	155	127	110	120	92	110	105	133	131	52	37	53	36	9	1,594
BRADFORD	0	1	3	5	3	9	4	13	8	10	9	3	4	3	0	75
BREVARD	1,298	806	760	677	685	674	682	708	718	698	588	551	594	450	25	9,914
BROWARD	6,630	3,328	2,955	2,856	2,663	2,591	2,626	3,005	2,886	2,794	2,961	2,923	2,424	2,311	590	43,543
CALHOUN	0	0	0	1	0	1	0	0	2	1	0	0	0	2	0	7
CHARLOTTE	214	154	148	121	112	122	115	86	80	84	44	45	21	24	0	1,370
CITRUS	253	89	89	61	63	52	66	62	68	58	49	33	23	24	15	1,005
CLAY	405	235	215	195	163	179	167	182	193	194	124	984	963	971	71	5,241
COLLIER	783	323	304	302	295	236	228	240	200	202	140	159	131	145	193	3,881
COLUMBIA	14	33	30	28	26	18	44	20	32	26	10	11	14	16	0	322
MIAMI-DADE	16,115	5,664	4,300	3,813	3,756	3,594	3,639	4,217	4,081	3,843	3,594	3,400	3,187	2,978	3,021	69,202
DESOTO	0	0	1	1	1	2	1	2	1	2	4	4	8	10	0	37
DUVAL	3,424	2,078	1,774	1,672	1,660	1,618	1,656	1,875	1,869	1,781	1,604	1,432	1,289	1,144	1,867	26,743
ESCAMBIA	941	764	692	600	542	532	524	533	491	471	322	281	342	306	128	7,469
FLAGLER	134	48	34	31	32	28	30	25	11	11	9	7	6	2	0	408
FRANKLIN	21	7	7	6	6	4	7	3	0	0	0	0	0	0	0	61
GADSDEN	31	48	33	50	36	29	40	44	45	40	41	36	40	31	0	544
GILCHRIST	27	11	7	5	10	5	4	2	64	37	30	28	14	6	0	250
GLADES	0	0	0	0	0	0	0	0	0	0	17	2	3	0	0	22
GULF	41	18	9	6	7	3	1	9	3	1	0	0	0	0	0	98
HAMILTON	49	2	1	1	0	0	0	1	0	0	0	0	0	0	82	136
HARDEE	25	7	2	2	2	2	4	1	2	10	0	2	1	0	9	69
HENDRY	37	37	28	27	19	17	15	15	16	11	4	6	5	1	0	238
HERNANDO	362	163	150	162	127	146	126	139	116	102	64	57	50	56	1	1,821
HIGHLANDS	121	84	67	60	55	52	43	51	47	45	52	32	37	34	8	788
HILLSBOROUGH	3,406	2,079	1,934	1,740	1,644	1,500	1,557	1,638	1,545	1,546	1,157	1,001	985	947	504	23,183
HOLMES	2	2	2	3	2	2	2	2	7	8	25	18	14	7	0	96
INDIAN RIVE	135	130	130	129	137	136	128	133	154	142	94	107	95	71	23	1,744
JACKSON	16	26	19	11	7	16	23	13	9	9	5	3	3	1	116	277
JEFFERSON	45	47	29	35	31	26	35	33	32	32	31	14	24	17	6	437
LAKE	564	308	266	252	238	266	250	214	236	234	164	129	124	94	168	3,507
LEE	1,508	724	614	596	595	543	517	581	548	535	504	483	388	341	234	8,711
LEON	1,158	451	388	389	396	350	374	389	390	377	243	199	190	209	82	5,585
LEVY	0	4	9	3	10	7	5	6	7	9	6	3	5	1	0	75
MADISON	19	18	17	14	17	13	20	16	16	13	0	0	0	0	0	163
MANATEE	420	314	305	280	250	266	253	277	266	302	262	227	258	224	68	3,972
MARION	610	383	363	327	347	319	330	400	389	410	336	250	187	177	6	4,834
MARTIN	387	193	168	178	179	171	173	183	134	165	45	32	32	29	75	2,144
MONROE	278	91	54	46	42	48	51	52	46	44	29	15	14	13	0	823
NASSAU	194	114	82	74	67	59	56	54	41	30	35	30	27	37	0	900
OKALOOSA	346	238	156	178	143	174	147	141	156	128	120	106	90	98	92	2,313
OKEECHOBEE	35	30	34	19	22	14	21	9	6	8	5	6	5	0	0	214
ORANGE	3,458	2,146	1,843	1,687	1,603	1,529	1,384	1,645	1,489	1,494	1,044	978	892	839	1,346	23,377
OSCEOLA	529	279	276	234	236	204	237	188	175	132	67	66	67	36	38	2,764
PALM BEACH	3,822	2,540	2,350	2,202	2,181	2,068	2,066	2,132	2,024	1,929	1,463	1,335	1,239	1,213	279	28,843
PASCO	537	255	261	227	225	204	213	197	182	186	77	59	46	35	66	2,770
PINELLAS	2,262	1,583	1,516	1,480	1,477	1,447	1,477	1,537	1,407	1,349	981	885	805	749	908	19,863
POLK	846	648	605	635	580	553	568	624	576	576	458	405	331	366	62	7,833
PUTNAM	45	32	37	35	30	52	35	43	55	52	68	54	30	28	12	608
ST. JOHNS	555	230	208	182	181	164	157	135	107	110	75	93	89	92	153	2,531
ST. LUCIE	470	250	245	229	207	229	221	230	235	219	262	202	202	183	58	3,442
SANTA ROSA	242	85	50	38	38	33	33	30	43	39	63	47	40	23	13	817
SARASOTA	730	447	372	405	427	413	450	447	395	421	393	374	353	320	255	6,202
SEMINOLE	1,624	908	860	818	744	718	743	647	727	613	527	495	453	391	187	10,455
SUMTER	4	0	9	0	3	5	7	5	3	3	3	4	3	6	0	55
SUWANNEE	58	40	23	27	17	34	16	25	28	26	34	10	14	16	0	368
TAYLOR	1	1	0	0	0	3	1	3	0	1	1	0	1	0	0	12
UNION	0	0	0	0	0	0	0	0	0	0	0	0	0	0	0	0
VOLUSIA	1,183	611	546	496	443	483	455	515	469	459	322	269	294	296	357	7,198
WAKULLA	0	0	0	2	1	2	1	5	2	2	4	1	1	0	0	21
WALTON	22	10	11	11	9	10	12	8	4	24	11	15	11	10	0	168
TOTAL	57,607	29,570	25,761	24,035	23,152	22,277	22,373	24,065	23,129	22,346	18,741	18,039	16,627	15,506	11,313	354,541

Table 3
DISTRIBUTION OF STUDENTS IN PUBLIC AND NONPUBLIC SCHOOLS
2001-02

District	Public School Membership PK-12		Nonpublic School Enrollment Pk-12	
	Number	Percent of Total	Number	Percent of Total
ALACHUA	29,705	89.88	3,345	10.12
BAKER	4,491	98.83	53	1.17
BAY	26,053	94.23	1,594	5.77
BRADFORD	4,098	98.20	75	1.80
BREVARD	71,796	87.87	9,914	12.13
BROWARD	262,158	85.76	43,543	14.24
CALHOUN	2,214	99.68	7	0.32
CHARLOTTE	17,332	92.67	1,370	7.33
CITRUS	15,235	93.81	1,005	6.19
CLAY	29,021	84.70	5,241	15.30
COLLIER	36,511	90.39	3,881	9.61
COLUMBIA	9,564	96.74	322	3.26
MIAMI-DADE	374,908	84.42	69,202	15.58
DESOTO	4,723	99.22	37	0.78
DIXIE	2,264	100.00	0	0.00
DUVAL	126,969	82.60	26,743	17.40
ESCAMBIA	44,698	85.68	7,469	14.32
FLAGLER	7,161	94.61	408	5.39
FRANKLIN	1,443	95.94	61	4.06
GADSDEN	7,439	93.19	544	6.81
GILCHRIST	2,672	91.44	250	8.56
GLADES	1,100	98.04	22	1.96
GULF	2,220	95.77	98	4.23
HAMILTON	2,152	94.06	136	5.94
HARDEE	5,100	98.67	69	1.33
HENDRY	7,586	96.96	238	3.04
HERNANDO	17,953	90.79	1,821	9.21
HIGHLANDS	11,307	93.48	788	6.52
HILLSBOROUGH	169,855	87.99	23,183	12.01
HOLMES	3,537	97.36	96	2.64
INDIAN RIVER	15,439	89.85	1,744	10.15
JACKSON	7,339	96.36	277	3.64
JEFFERSON	1,709	79.64	437	20.36
LAFAYETTE	1,031	100.00	0	0.00
LAKE	30,638	89.73	3,507	10.27
LEE	60,713	87.45	8,711	12.55
LEON	31,833	85.07	5,585	14.93
LEVY	6,253	98.81	75	1.19
LIBERTY	1,328	100.00	0	0.00
MADISON	3,439	95.47	163	4.53
MANATEE	38,264	90.60	3,972	9.40
MARION	39,361	89.06	4,834	10.94
MARTIN	16,803	88.68	2,144	11.32
MONROE	9,274	91.85	823	8.15
NASSAU	10,442	92.06	900	7.94
OKALOOSA	30,900	93.04	2,313	6.96
OKEECHOBEE	6,938	97.01	214	2.99
ORANGE	157,035	87.04	23,377	12.96
OSCEOLA	37,787	93.18	2,764	6.82
PALM BEACH	160,033	84.73	28,843	15.27
PASCO	52,684	95.00	2,770	5.00
PINELLAS	114,360	85.20	19,863	14.80
POLK	81,186	91.20	7,833	8.80
PUTNAM	12,636	95.41	608	4.59
ST. JOHNS	20,925	89.21	2,531	10.79
ST. LUCIE	30,557	89.88	3,442	10.12
SANTA ROSA	23,242	96.60	817	3.40
SARASOTA	37,082	85.67	6,202	14.33
SEMINOLE	62,779	85.72	10,455	14.28
SUMTER	6,394	99.15	55	0.85
SUWANNEE	5,803	94.04	368	5.96
TAYLOR	3,637	99.67	12	0.33
UNION	2,130	100.00	0	0.00
VOLUSIA	62,379	89.65	7,198	10.35
WAKULLA	4,686	99.55	21	0.45
WALTON	5,968	97.26	168	2.74
WASHINGTON	3,377	100.00	0	0.00
DEAF/BLIND	717	100.00	0	0.00
DOZIER/OKEEC	419	100.00	0	0.00
FAU LAB SCH	478	100.00	0	0.00
FSU LAB SCH	1,409	100.00	0	0.00
FAMU LAB SCH	515	100.00	0	0.00
UF LAB SCH	1,197	100.00	0	0.00
TOTAL	2,502,384	87.59	354,541	12.41

**Table 4
POSTSECONDARY PLANS INDICATED BY
GRADUATES FROM NONPUBLIC HIGH SCHOOLS
SPRING 2001**

DISTRICT	TOTAL GRADUATES	FLORIDA COMMUNITY COLLEGES		FLORIDA UNIVERSITIES/COLLEGES		OUT-OF-STATE COLLEGES AND UNIVERSITY	TECHNICAL, TRADE AND OTHER SCHOOLS	
		PUBLIC	PRIVATE	PUBLIC	PRIVATE		IN-STATE	OUT-OF-STATE
ALACHUA	100	24	0	32	5	27	1	0
BAKER	0	0	0	0	0	0	0	0
BAY	36	24	0	3	1	0	0	0
BRADFORD	4	1	1	0	0	0	0	0
BREVARD	412	159	5	119	57	66	0	0
BROWARD	2,110	359	30	811	231	564	13	3
CALHOUN	0	0	0	0	0	0	0	0
CHARLOTTE	13	2	0	3	3	5	1	0
CITRUS	25	11	0	4	6	2	0	0
CLAY	342	23	1	39	14	44	0	0
COLLIER	92	7	0	17	15	42	1	4
COLUMBIA	5	4	0	0	0	1	0	0
MIAMI-DADE	3,265	613	45	1,079	385	753	44	50
DESOTO	6	0	0	0	0	5	0	0
DUVAL	1,284	305	5	364	111	252	6	11
ESCAMBIA	273	70	7	56	53	73	2	0
FLAGLER	5	4	0	1	0	0	0	0
FRANKLIN	0	0	0	0	0	0	0	0
GADSDEN	33	17	0	6	1	2	0	0
GILCHRIST	7	27	0	0	1	3	0	1
GLADES	0	0	0	0	0	0	0	0
GULF	0	0	0	0	0	0	0	0
HAMILTON	0	0	0	0	0	0	0	0
HARDEE	0	0	0	0	0	0	0	0
HENDRY	3	1	0	0	0	0	0	0
HERNANDO	50	16	0	9	6	2	0	0
HIGHLANDS	23	14	5	0	1	6	2	0
HILLSBOROUGH	934	124	14	339	95	228	4	3
HOLMES	10	0	0	0	0	0	0	0
INDIAN RIVER	91	5	0	18	12	48	0	0
JACKSON	6	0	2	0	0	1	0	0
JEFFERSON	23	12	0	3	0	0	2	0
LAKE	93	30	0	19	6	24	6	3
LEE	340	82	0	96	42	66	0	0
LEON	202	70	0	48	11	62	4	0
LEVY	2	0	0	0	0	0	0	0
MADISON	0	0	0	0	0	0	0	0
MANATEE	181	28	1	32	16	92	2	1
MARION	243	56	3	23	14	5	0	1
MARTIN	33	12	0	0	11	3	0	0
MONROE	10	1	0	2	4	3	0	0
NASSAU	18	6	0	1	3	6	1	0
OKALOOSA	114	43	2	3	6	21	0	0
OKEECHOBEE	0	0	0	0	0	0	0	0
ORANGE	868	187	2	249	98	255	12	2
OSCEOLA	47	20	0	1	4	3	0	0
PALM BEACH	1,077	221	8	315	122	318	10	8
PASCO	25	7	2	3	2	3	0	0
PINELLAS	1,142	212	6	226	71	160	10	3
POLK	359	60	2	54	62	81	0	2
PUTNAM	35	15	1	0	2	2	0	0
ST. JOHNS	105	30	3	33	18	15	2	2
ST. LUCIE	149	67	0	50	13	12	0	1
SANTA ROSA	26	5	0	6	5	5	0	0
SARASOTA	260	64	1	82	29	66	7	3
SEMINOLE	337	75	24	42	25	93	1	2
SUMTER	5	2	0	0	0	0	0	0
SUWANNEE	15	4	0	0	2	2	2	0
TAYLOR	0	0	0	0	0	0	0	0
UNION	0	0	0	0	0	0	0	0
VOLUSIA	175	61	1	37	25	18	6	0
WAKULLA	0	0	0	0	0	0	0	0
WALTON	7	0	0	0	2	1	0	0
TOTAL	15,020	3,180	171	4,225	1,590	3,440	139	100

Table 5
DISTRIBUTION OF STUDENTS OVER A TEN-YEAR PERIOD

Year	<i>Total Reported (Nonpublic and Public) Enrollment</i>	<i>Public School PK-12 Enrollment</i>		<i>Nonpublic School PK-12 Enrollment</i>	
		Number	Percent	Number	Percent
1992-93	2,150,377	1,950,114	90.69	200,263	9.31
1993-94	2,227,240	2,005,970	90.07	221,270	9.93
1994-95	2,298,752	2,064,884	89.83	233,868	10.17
1995-96	2,420,462	2,175,233	89.87	245,229	10.13
1996-97	2,446,044	2,188,239	89.47	257,805	10.54
1997-98	2,563,647	2,293,093	89.45	270,554	10.55
1998-99	2,610,392	2,335,681	89.48	274,711	10.52
1999-00	2,670,108	2,381,860	89.20	288,248	10.80
2000-01	2,784,625	2,435,889	87.47	348,736	12.52
2001-02	2,856,925	2,502,384	87.59	354,541	12.41

**Table 6
NONPUBLIC SCHOOLS COUNT**

DISTRICT	PRE-K	K-12	K-8	9-12	ESE	OTHER	TOTAL
ALACHUA	5	9	13	3	0	0	30
BAKER	0	0	1	1	0	0	2
BAY	0	6	4	0	0	0	10
BRADFORD	0	2	1	0	0	0	3
BREVARD	5	25	26	4	0	0	60
BROWARD	21	39	92	9	1	1	163
CALHOUN	0	1	0	0	0	0	1
CHARLOTTE	0	6	7	0	0	0	13
CITRUS	1	4	2	0	0	0	7
CLAY	2	13	5	4	0	0	24
COLLIER	1	3	12	3	0	0	19
COLUMBIA	0	3	2	0	0	0	5
MIAMI-DADE	84	49	219	22	4	1	379
DESOTO	0	2	0	0	0	0	2
DUVAL	9	48	65	7	3	1	133
ESCAMBIA	0	9	18	1	2	0	30
FLAGLER	1	2	1	0	0	0	4
FRANKLIN	0	0	1	0	0	0	1
GADSDEN	0	2	0	0	0	0	2
GILCHRIST	0	1	1	0	0	0	2
GLADES	0	0	0	1	0	0	1
GULF	0	0	1	0	0	0	1
HAMILTON	1	0	1	2	0	0	4
HARDEE	0	1	2	0	0	0	3
HENDRY	0	1	1	0	0	0	2
HERNANDO	0	6	4	1	0	0	11
HIGHLANDS	0	4	3	0	1	0	8
HILLSBOROUGH	11	40	72	10	0	0	133
HOLMES	0	2	0	0	0	0	2
INDIAN RIVER	0	4	5	1	0	0	10
JACKSON	0	3	0	0	0	0	3
JEFFERSON	0	1	0	0	1	0	2
LAKE	3	17	16	4	0	0	40
LEE	6	22	24	7	1	0	60
LEON	3	8	20	2	1	0	34
LEVY	0	2	0	0	0	0	2
MADISON	0	0	1	0	0	0	1
MANATEE	0	14	13	2	1	1	31
MARION	1	17	18	1	0	0	37
MARTIN	1	3	8	0	0	0	12
MONROE	2	2	4	0	0	0	8
NASSAU	1	6	3	0	0	0	10
OKALOOSA	0	6	5	0	1	0	12
OKEECHOBEE	0	3	0	0	0	0	3
ORANGE	12	37	64	6	1	0	120
OSCEOLA	3	8	7	1	0	0	19
PALM BEACH	18	32	63	11	0	1	125
PASCO	3	13	8	3	0	0	27
PINELLAS	11	37	53	13	0	1	115
POLK	1	14	22	1	3	1	42
PUTNAM	0	9	0	1	1	0	11
ST. JOHNS	3	3	12	4	0	0	22
ST. LUCIE	3	13	5	1	0	0	22
SANTA ROSA	1	6	1	1	0	0	9
SARASOTA	3	15	15	2	3	1	39
SEMINOLE	4	18	30	4	1	0	57
SUMTER	0	2	0	0	0	0	2
SUWANNEE	0	3	1	0	0	0	4
TAYLOR	0	1	0	0	0	0	1
UNION	0	0	0	0	0	0	0
VOLUSIA	2	20	24	4	1	0	51
WAKULLA	0	1	0	0	0	0	1
WALTON	0	5	0	0	0	0	5
TOTAL	222	623	976	137	26	8	1,992

**SUMMARY OF NONPUBLIC SCHOOL
SELECTED CHARACTERISTICS
SCHOOL YEAR 2001-02**

Total number of students (PK-12)	354,541
Total number of schools (PK-12)	1,992
Total instructional/ administrative Personnel in nonpublic schools (PK-12)	36,004

Percentage of state school age population (PK-12) in nonpublic schools: 12.41%

Counties with at least twelve percent or more of school-age students enrolled in nonpublic schools:

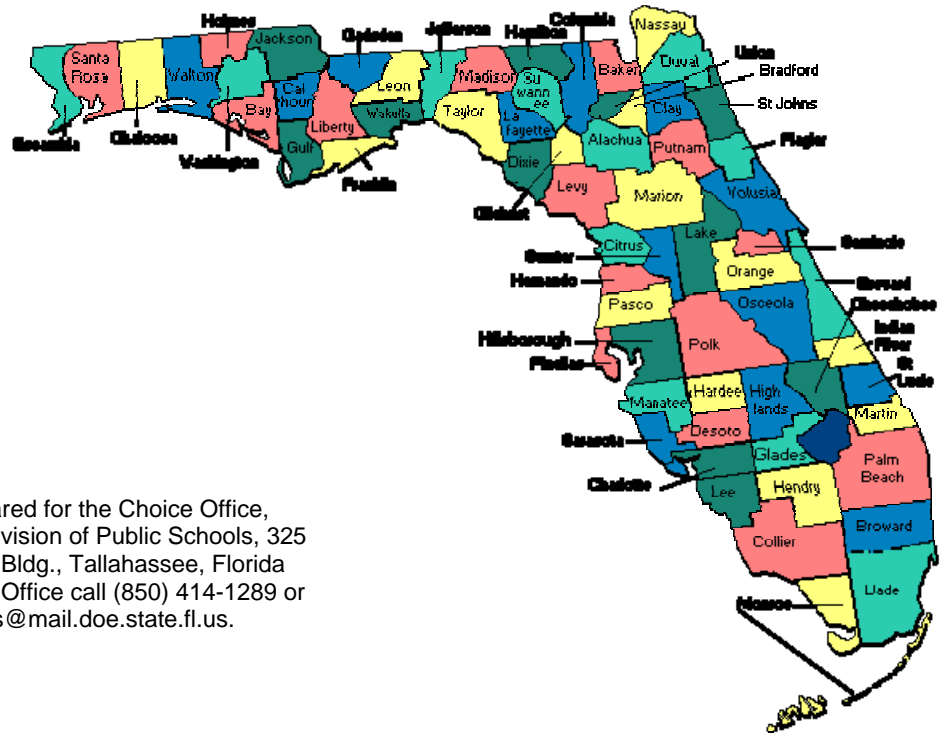
Counties	Percent
Jefferson	20.36
Duval	17.40
Miami-Dade	15.58
Clay	15.30
Palm Beach	15.27
Leon	14.93
Pinellas	14.80
Sarasota	14.33
Escambia	14.32
Seminole	14.28
Broward	14.24
Orange	12.96
Lee	12.55
Brevard	12.13
Hillsborough	12.01

Counties with no reported nonpublic schools (PK-12):

Dixie Lafayette Liberty Washington

This page intentionally left blank.

FLORIDA SCHOOL DISTRICTS



This report was designed and prepared for the Choice Office, Florida Department of Education, Division of Public Schools, 325 West Gaines Street, 544 Turlington Bldg., Tallahassee, Florida 32399-0400. To contact the Choice Office call (850) 414-1289 or Suncom 994-1289 or e-mail askeias@mail.doe.state.fl.us.

CHARLIE CRIST, Commissioner
Florida Department of Education
Choice Office
325 W. Gaines Street, 544 Turlington Building
Tallahassee FL 32399-0400

ADDRESS CORRECTION REQUESTED