



Florida Department of Education



Office of Independent Education & Parental Choice

325 West Gaines Street • Suite 522 • Tallahassee, FL • 32399-0400 • 850/245-0502 • www.floridaschoolchoice.org

OPPORTUNITY

Scholarship Program

JUNE QUARTERLY REPORT 2006

The Opportunity Scholarship Program allows parents to choose a higher performing public school, or a participating private school of their choice if their child(ren) attended, or were assigned to attend a failing Florida public school. A failing public school is a school that has received two "F" grades within a four-year period.

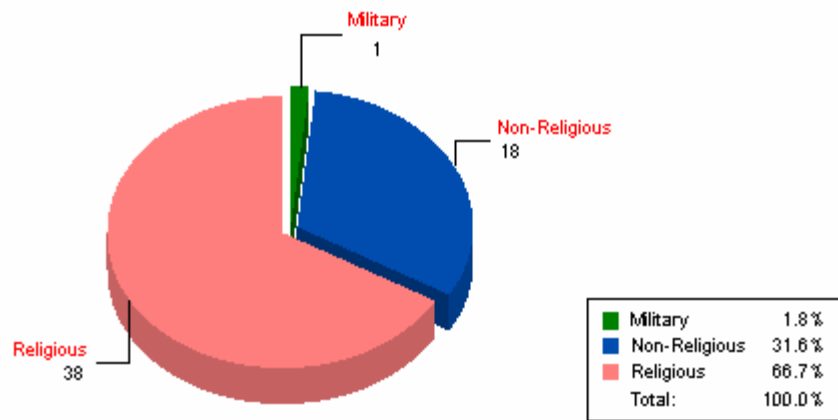
This report contains cumulative private school and student statistics through the September, November, February and April payment periods of the 2005-2006 school year.

OSP Student Payment by District

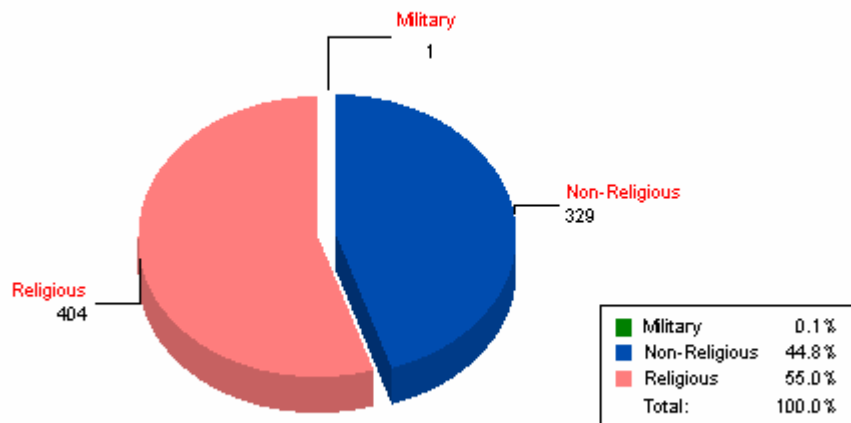
<u>DISTRICT</u>	<u>SCHOOLS</u>	<u>STUDENTS</u>	<u>%</u>	<u>TOTAL PAYMENT</u>	<u>%</u>
BROWARD	5	18	2.5%	\$70,534.00	2.4%
DADE	17	432	58.9%	\$1,816,099.00	60.9%
DUVAL	8	67	9.1%	\$243,604.00	8.2%
ESCAMBIA	4	12	1.6%	\$43,169.50	1.4%
GADSDEN	3	15	2.0%	\$54,790.50	1.8%
JEFFERSON	2				
ORANGE	11	98	13.4%	\$381,938.75	12.8%
PALM BEACH	7	90	12.3%	\$366,661.50	12.3%
Grand Total:	57	734	100.0%	\$2,982,448.25	100.0%

Note: Blanks indicate less than 11 students per district and are not displayed but calculated in total in order to protect student confidentiality.

Private Schools Participating in OSP by Type

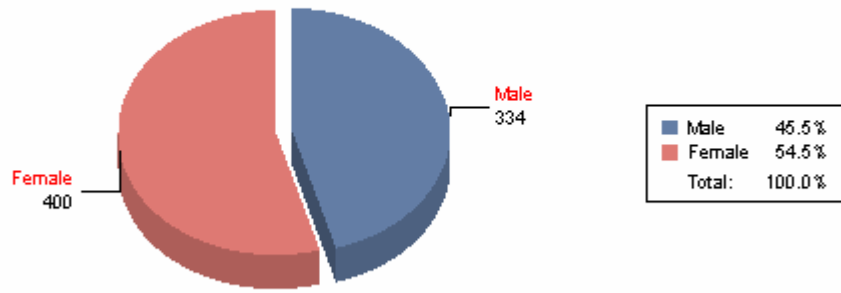


OSP Student Enrollment by Type of Private School



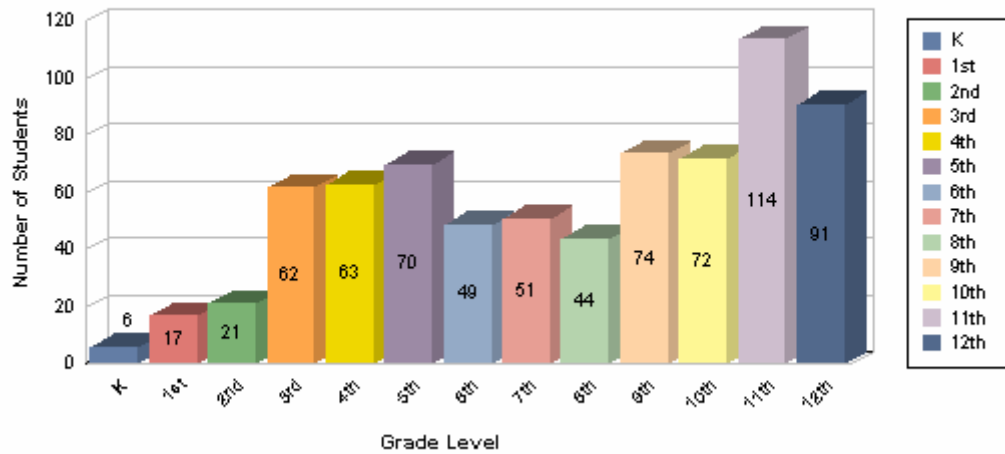
<u>SCHOOL TYPE</u>	<u>SCHOOLS</u>	<u>%</u>	<u>STUDENTS</u>	<u>%</u>
Military	1	1.8%	1	0.1%
Non-Religious	18	31.6%	329	44.8%
Religious	38	66.7%	404	55.0%
Grand Total:	57	100.0%	734	100.0%

OSP Student Enrollment by Gender



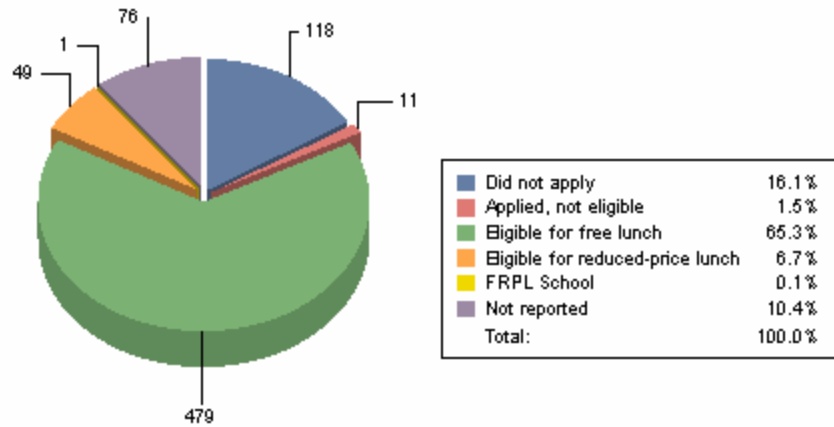
<u>GENDER</u>	<u>STUDENTS</u>	<u>PERCENTAGE</u>
Male	334	45.5%
Female	400	54.5%
Grand Total:	734	100.0%

OSP Student Enrollment by Grade Level



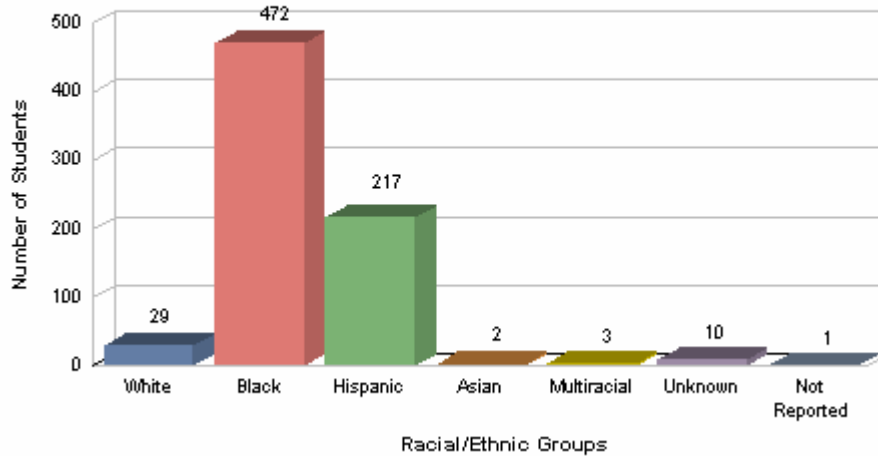
<u>GRADE LEVEL</u>	<u>STUDENTS</u>	<u>PERCENTAGE</u>
K	6	0.8%
1st	17	2.3%
2nd	21	2.9%
3rd	62	8.4%
4th	63	8.6%
5th	70	9.5%
6th	49	6.7%
7th	51	6.9%
8th	44	6.0%
9th	74	10.1%
10th	72	9.8%
11th	114	15.5%
12th	91	12.4%
Grand Total:	734	100.0%

OSP Student Eligibility for Free and Reduced-price Lunch (FRPL)



<u>LUNCH PROGRAMS</u>	<u>STUDENTS</u>	<u>PERCENTAGE</u>
Did not apply	118	16.1%
Applied, not eligible	11	1.5%
Eligible for free lunch	479	65.3%
Eligible for reduced-price lunch	49	6.7%
FRPL School	1	0.1%
Not reported	76	10.4%
Grand Total:	734	100.0%

OSP Student Racial/Ethnicity Enrollment



<u>RACE</u>	<u>STUDENTS</u>	<u>PERCENTAGE</u>
White	29	4.0%
Black	472	64.3%
Hispanic	217	29.6%
Asian	2	0.3%
Multiracial	3	0.4%
Unknown	10	1.4%
Not Reported	1	0.1%
Grand Total:	734	100.0%